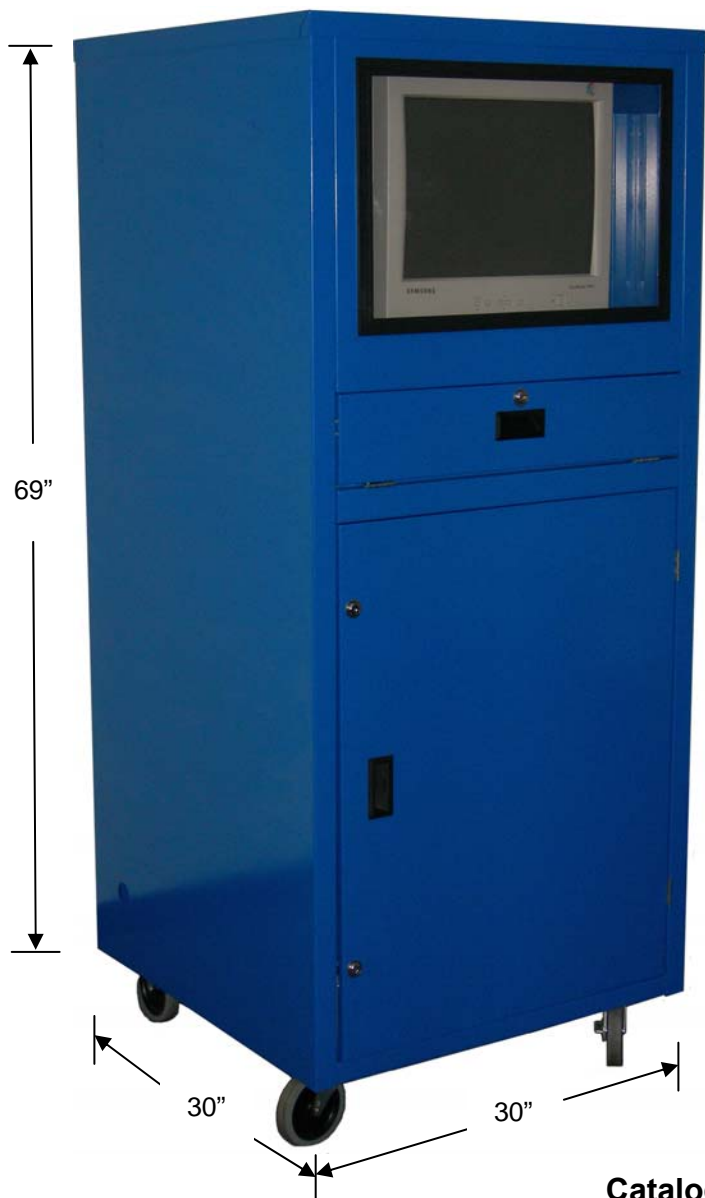




A Division of Consolidated Storage Companies, Inc.

NEW
PRODUCT NEWS

Mobile Computer Workstation



The **Equipto Mobile Computer Workstation** is designed to secure and protect your valuable computer equipment and peripherals in virtually any working environment.

Outstanding features include:

- Front and back key-locked doors provide security while allowing easy equipment access to authorized personnel.
- Full door seals to keep dust, metal shards and other debris away from your equipment.
- Easy station-to-station mobility on four heavy-duty casters.
- Built-in fan and louvers for temperature control.
- Lockable slide-out keyboard and mouse tray.
- Heavy-duty slide-out printer shelf.

Catalog Number	Dimensions	Weight
ECWS-303069	30"W x 30"D x 69"H	305

Versatile Equipto Mobile Computer Workstations offer the security and protection your technology investment deserves! Contact your local Equipto Distributor today or call Customer Service at 800-323-0801.

Check out these features!

SCRATCH-RESISTANT LEXAN MONITOR WINDOW

ADJUSTABLE MONITOR SHELF CAN HOLD UP TO A 21" MONITOR

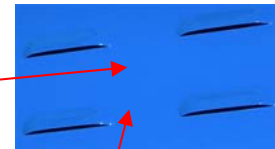
LOCKABLE SLIDEOUT KEYBOARD AND MOUSE TRAY



ADJUSTABLE SLIDE OUT PRINTER SHELF

ACCOMMODATES DESKTOP OR FULL SIZE TOWER PC

SEALED ACCESS DOORS TO KEEP OUT DUST AND DEBRIS



LOUVERS FOR INCREASED AIR FLOW

FULL SIZE LOCKABLE REAR ACCESS DOOR FOR EASY ACCESS

2 RIGID & 2 SWIVEL CASTERS FOR EASY MOBILITY

BUILT IN AIR-INTAKE FAN WITH FILTER

Distributed by:

Equipto
225 Main Street
Tatamy, Pennsylvania 18085
800-323-0801 ♦ 888-859-2121
www.equipto.com

