

EQUIPTO[®]

Armadillo product line



EQUIPTO®



EQUIPTO'S INDUSTRIAL CABINET LINE PROVIDES YOU WITH THE ULTIMATE IN HEAVY DUTY 12 GAUGE CABINETS

BUILT TO LAST...

- 12 GAUGE STEEL ONE PIECE WRAP AROUND SHELL
- 12 GAUGE STEEL DOORS
- 12 GAUGE STEEL BOTTOM
- 14 GAUGE STEEL SHELVES ATTACHED WITH 3/8" CARRIAGE BOLTS
- 8 GAUGE HINGE LEAF, 5/16" BRASS HINGE PIN, 3/4" RECEIVER
- CAST ALUMINUM BRONZE ALLOY HANDLE, PADLOCK TANG, 3/8" ANGLE RECEIVER WITH THREE POINT LOCKING DEVICE, 3/8" LATCH ROD, 3/16" LATCH PLATE
- 3/16" STEEL LEGS, PROVISION FOR LAGGING, 6" SWEEP SPACE

CABINET INDEX:

- HEAVY DUTY STANDARD CABINETS
PAGES 1 & 2
- BIN CABINETS
PAGES 3 & 4
- JANITORIAL CABINETS
PAGES 6 & 7
- TOOL CRIB CABINET, COLORS & OPTIONS
PAGE 8

HEAVY DUTY STANDARD CABINET



HEAVY DUTY, 12 GAUGE STEEL, ALL WELDED DESIGN, SPECIFICALLY FOR INDUSTRIAL APPLICATIONS

EACH CABINET INCLUDES:

- 14 GAUGE SHELVES WITH UP TO 1900 LB. CAPACITY
- ADJUSTABLE SHELVES 2" INCREMENTS
- HANDLE INCLUDES A HASP FOR USE WITH PADLOCK
- 7 GAUGE WELDED LEGS FOR MOVING AND DURABILITY
- MORE SHELVES CAN BE ADDED FOR VERSATILITY

Part No.	Dimensions (W x D x H)	Overall Height	Shelves	Shelf P/N	Capacity	WGT
ICL24132*	36" x 24" x 60"	66"	3	ICS8241	1900	406
ICL25103	36" x 20" x 72"	78"	4	ICS8251	1600	435
ICL25133	36" x 24" x 72"	78"	4	ICS8241	1900	475
ICL34132*	48" x 24" x 60"	66"	3	ICS8341	1200	489
ICL35133	48" x 24" x 72"	78"	4	ICS8341	1200	573
ICL44132*	60" x 24" x 60"	66"	3	ICS8441	1650	595
ICL45133	60" x 24" x 72"	78"	4	ICS8441	1650	699
ICL54132*	72" x 24" x 60"	66"	3	ICS8551	1525	726
ICL55133	72" x 24" x 72"	78"	4	ICS8551	1525	856

* CASTERS OPTIONAL

EVERY UNIT COMES FULLY ASSEMBLED

EQUIPTO

HEAVY DUTY STANDARD CABINET

HALF & HALF CABINET

- EASILY SEPARATE YOUR ITEMS ON SHELVES OR IN DRAWERS
- CABINET SHELVES CAN BE ADJUSTED IN 2" INCREMENTS TO ACCOMMODATE BOTH LARGE AND SMALL ITEMS



Part No.	Dimensions (W x D x H)	Overall Height	Shelf P/N	Shelf Capacity	Drawer Width	Drawer Capacity	WGT
ICL3513354	48" x 24" x 72"	78"	ICS8342	1,125	19"	225	917
ICL4513354	60" x 24" x 72"	78"	ICS8442	1,575	25"	225	1,079
ICL5513354	72" x 24" x 72"	78"	ICS8552	1,450	31"	225	1,267



DUAL ZONE CABINET

- PROVIDES YOU WITH TWO SEPARATE SHELVING COMPARTMENTS
- BOTH SIDES CAN BE LOCKED INDEPENDENTLY; WHILE ONE SIDE IS LOCKED YOU CAN WORK OUT OF THE OTHER
- PERFECT FOR TWO PEOPLE

Part No.	Dimensions (W x D x H)	Overall Height	Shelf P/N	Adjustable Shelves Each Side	Capacity	WGT
ICL25137	36" x 24" x 72"	78"	ICS8243	4	950	544
ICL35137	48" x 24" x 72"	78"	ICS8343	4	1,275	642
ICL45137	60" x 24" x 72"	78"	ICS8443	4	1,600	740
ICL55137	72" x 24" x 72"	78"	ICS8553	4	1,950	838

EVERY UNIT COMES FULLY ASSEMBLED

4 SHELF BIN CABINET

WITH THE INTRODUCTION OF BIN STORAGE TO OUR SHELVING CABINETS, YOU ARE NOW ABLE TO STORE BOTH LARGE AND SMALL ITEMS ALL IN A SINGLE CABINET.

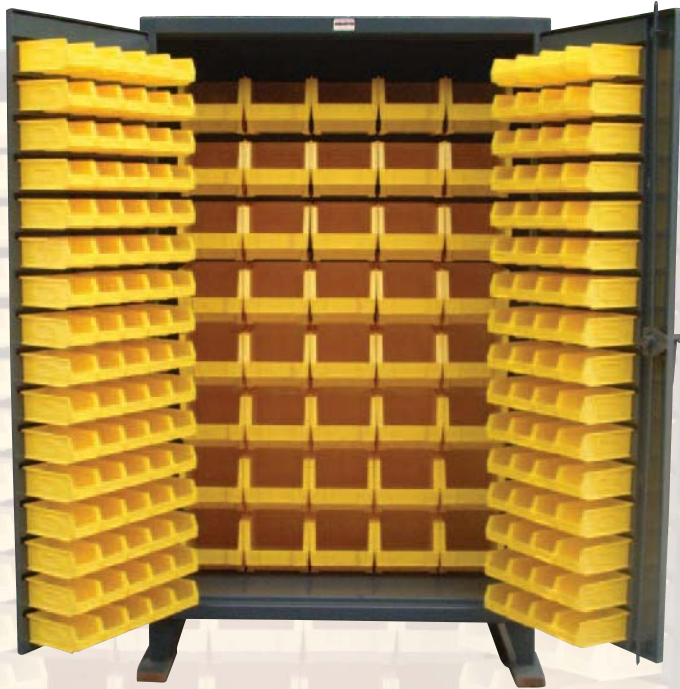
BINS ARE 4¹/₄" WIDE, 7³/₈" DEEP AND 3" HIGH AND CONSTRUCTED OF POLYPROPYLENE. VARIOUS BIN COLORS ARE AVAILABLE.



IT IS RECOMMENDED THAT THESE CABINETS BE ANCHORED TO YOUR FLOOR OR WALL.

Part No.	Dimensions (W x D x H)	Overall Height	Number of Small Bins	Shelf P/N	Shelf Capacity	WGT
ICLB710	36" x 24" x 72"	78"	94	ICS8742	1350	533
ICLB720	48" x 24" x 72"	78"	144	ICS8822	850	651

EVERY UNIT COMES FULLY ASSEMBLED



TOTAL BIN CABINET

PACKED WITH 32 LARGE BINS HOLDING UP TO 60 LBS. EACH, LARGE BINS ARE 8¹/₄" WIDE BY 14³/₄" DEEP AND 7" HIGH. THERE ARE 94 SMALL BINS WHICH HOLD UP TO 10 LBS EACH, AND COMES COMPLETELY ASSEMBLED.

Part No.	Dimensions (W x D x H)	Overall Height	Number of Small Bins	Number of Large Bins	WGT
ICLB730	36" x 24" x 72"	78"	94	32	596
ICLB740	48" x 24" x 72"	78"	144	40	732

3 SHELF TOTAL BIN CABINET

ENJOY THE STORAGE OF THE TOTAL BIN CABINET WITH THE FLEXIBILITY OF 3 ADJUSTABLE SHELVES.



Part No.	Dimensions (W x D x H)	Overall Height	Number of Small Bins	Number of Large Bins	Shelf P/N	Shelf Capacity	WGT
ICLB750	36" x 24" x 72"	78"	94	16	ICS8742	1350	579
ICLB760	48" x 24" x 72"	78"	144	20	ICS8822	850	756

EVERY UNIT COMES FULLY ASSEMBLED



STANDARD JANITORIAL CABINET

PROVIDES YOU WITH TWO STORAGE COMPARTMENTS, ONE FOR CLOTHING AND THE OTHER FOR MATERIALS AND TOOLS.

Part No.	Dimensions (W x D x H)	Overall Height	Closet Shelves	Closet Shelf P/N	Closet Shelf Capacity	Hanger Shelf P/N	Hanger Shelf Capacity	WGT
ICLJ551250	36" x 24" x 72"	78"	4	ICCS8244	1100	ICHS8245	775	501
ICLJ551260	48" x 24" x 72"	78"	4	ICCS8344	1500	ICHS8345	1050	594
ICLJ551270	60" x 24" x 72"	78"	4	ICCS8444	1900	ICHS8445	1300	687

DUAL ZONE JANITORIAL CABINET

PROVIDES YOU WITH TWO SEPARATE STORAGE COMPARTMENTS WHICH CAN BE OPENED AND LOCKED INDEPENDENTLY.



Part No.	Dimensions (W x D x H)	Overall Height	Closet Shelves	Closet Shelf P/N	Closet Shelf Capacity	Hanger Shelves	Hanger Shelf P/N	Hanger Shelf Capacity	WGT
ICLJ551300	72" x 24" x 72"	78"	8	ICCS8244	1025	2	ICHS8445	825	893

EVERY UNIT COMES FULLY ASSEMBLED



FULL LENGTH JANITORIAL CABINET

HEADING OUT TO THE JOB OR HEADING HOME FOR THE DAY? STORE YOUR PERSONAL AND WORK ITEMS IN ONE CABINET

Part No.	Dimensions (W x D x H)	Overall Height	Shelf P/N	Shelf Capacity	WGT
ICLJ551280	36" x 24" x 72"	78"	ICS8246	1900	421
ICLJ551290	48" x 24" x 72"	78"	ICS8346	1200	500

JANITORIAL BROOM SIDE CLOSET

STORE THOSE HOUSEKEEPING AND ITEMS WITH LONG HANDLES OUT OF THE WAY. ALSO STORE ANY OTHER MATERIALS LIKE CLEANERS, BRUSHES, OR TOOL CHESTS ON THE ADJUSTABLE SHELVES OF THE OTHER SIDE



Part No.	Dimensions (W x D x H)	Overall Height	Closet Shelves	Shelf P/N	Shelf Capacity	WGT
ICLJ551310	36" x 24" x 72"	78"	4	ICCS8244	1025	492
ICLJ551320	48" x 24" x 72"	78"	4	ICCS8344	1375	580
ICLJ551330	60" x 24" x 72"	78"	4	ICCS8444	1750	659
ICLJ551340	72" x 24" x 72"	78"	4	ICCS8544	1050	766

EVERY UNIT COMES FULLY ASSEMBLED



TOOL CRIB CABINET

TWO SEPARATE SECTIONS TO STORE ALL YOUR TOOL NEEDS. UP TOP YOU HAVE 3 ADJUSTABLE SHELVES, TWO OF WHICH ARE SLOTTED WITH METAL VERTICAL DIVIDERS.

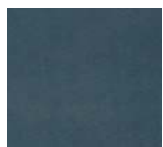
THE LOWER SECTION HAS A 14 GAUGE ADJUSTABLE SHELF. SEPARATING THE TWO SECTION IS A 12" DEEP SHELF WHICH CAN BE USED TO DO WORK ON OR REPAIR TOOLS.

Part No.	Dimensions (W x D x H)	Overall Height	Standard Shelf P/N	Standard Shelf Capacity	Slotted Shelf P/N	Slotted Shelf Capacity	Dividers/ Slotted Shelf	WGT
ICLTC551350	36" x 24" x 72"	78"	ICS8241	1900	ICSS8246	1425	3	509
ICLTC551360	48" x 24" x 72"	78"	ICS8341	1200	ICSS8346	900	4	637
ICLTC551370	60" x 24" x 72"	78"	ICS8441	1650	ICSS8446	1225	5	767

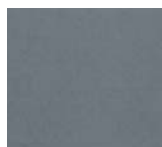
STANDARD COLOR IS DARK GRAY*,

OTHER COLORS ARE AVAILABLE UPON REQUEST**

COLORS



#10_Dark Gray



#20_Medium Gray



#30_Steeltone



#40_Dark Blue



#50_Safety Yellow



#60_Signal Red



#70_Buff

OTHER PAINT OPTIONS**

- ANTIMICROBIAL PAINT
- FINISH COAT PRESERVATIVE
- POWDER COAT FINISH IS ONLY AVAILABLE IN STANDARD DARK GRAY
- SPECIFIC COMPANY/LOGO COLORS

OTHER OPTIONS

- OTHER BIN COLORS ARE AVAILABLE
- CASTERS ARE AVAILABLE ONLY ON NOTED PRODUCTS

EVERY UNIT COMES FULLY ASSEMBLED

* STANDARD PAINT IS DARK GRAY WATER BASED APPLICATION

** ADDITIONAL CHARGES AND LEAD TIMES WILL APPLY



EQUIPTO[®]

Armadillo product line

EQUIPTO

225 Main Street

Tatamy, PA 18085

Phone: 800.323.0801

Fax: 888.859.2121

www.equipto.com

EQUIPTO IS A DIVISION OF CONSOLIDATED STORAGE COMPANIES, INC.